



NEWSLETTER

Apr 2026

FOR THE MEMBERS OF CHILLIWACK PIECEMAKERS QUILT GUILD

Monthly Meeting
Wed 15 Apr 2026

Program

6:30 start In Person -



This month we will be joined by Jill Schuler, the founder of The Stitchery Studio, a fabric shop and studio known for its considered approach to modern textiles. She will be speaking with us about Liberty fabric.

There will be a pop-up shop set up for members to enjoy as well. Cash and card payments will be accepted.



- Leah & Iris

Presidents Message

It was great to see everyone at the meeting last month, lots of chatter and laughter, there's nothing quite like getting together in person after being apart for 3 months.

The sun has been shining over the weekend, the gardens are putting on quite a show at the moment with the bright green leaves and lots of flowers.

It's that time of year when people reassess what roles they take on in the guild. Deb and Carol have volunteered to take on the Fat Quarter draw as Bev continues with her Vice President position. Kate is looking to train someone to take on the Treasurer position, please speak to Kate or myself about what is involved.

Over this past week I have seen quite a few posts on Facebook about the quilts the students of Tumbler Ridge have been able to choose from. I am so proud of our guild for providing so many.

I am missing this month's meeting as I am on a retreat, so see you in May

- Lyn

Mystery Bag Challenge

Only about half of the bag projects showed up at the March meeting if you have a finished one, we would still love to see it, please bring it to the April meeting.



About Our Presenter

Jill Schuler

Liberty London is more than a fabric house—it is a study in pattern, heritage, and enduring design. In this talk, Jill explores the cultural and creative legacy of the iconic British brand, from its Arts and Crafts foundations to its continued pursuit of innovation.

She offers a closer look at Liberty's fabric design process, including production at its renowned Italian mill, and reflects on the qualities that have made Tana Lawn a modern classic. Jill highlights the qualities that define Liberty Fabrics enduring appeal and uncovers inspiration for your own projects.

Drawing on her perspective as a maker and retailer, Jill shares a considered appreciation of Liberty as both heritage and modern luxury.

Since 2017, Jill has been curating fabrics and experiences that celebrate creativity with depth, intention, and a sense of belonging.

Originally trained in costume design for film, theatre, and circus, Jill brings a refined, design-led perspective to her work. She is drawn to richness, detail, and narrative in cloth, with a particular connection to Liberty fabrics and the textile heritage of her native Northern Ireland.

Through her work, she invites others to see fabric not just as material, but as a language—one that is expressive, layered, and quietly powerful.

Charitable Donations

At the March meeting we voted on charities to receive \$200.00 cheques have been delivered to Wilma's Transition Society, Meadow Rose, and Chilliwack Hospice Society. They were all very appreciative.



Quilt Deliveries

Quote taken from the Tumbler Ridge High School Facebook page. *'These are the most beautiful quilts. Every time we moved a bag, more colourful works of art were seen. They will be given to students tomorrow and I cannot wait to see the joy on the student's faces as they get to pick the one they want.'*



Fat Quarter Draw

This month's colour is **BLUE**.

We Care

Well Spring has arrived and now that days are longer and with some better weather days often our quilting gets

Days for Girls

We are always looking for people who are interested in helping with DFG whether you are a Sewer or perhaps just want to cut, label or string the bags or liners!!! If you are interested in the program, please check out the website – we are an international organization!

<http://www.daysforgirls.org/canada/>

Thank you to anyone who contributed fabric and your sewing skills – you are amazing for sharing your skills and fabrics for such a great cause and empowering women!!! Imagine what we could do with MORE helpers! Our next Sew day will be held on **Friday April 24 - 10:00 – 2:00 pm** (Bring your machine or serger and a lunch). Coffee & tea is available! Come and check it out stay for the whole time or just awhile. Once you have had some training on the pieces to be sewn, we always are happy to send items home with you to complete on your own time! We also need people who would be willing to “cut” (rotary) fabric. Westgate Apartments – 8955 Edward Street Chilliwack – Amenities Room off to the right side of the main entrance. This building is behind the Hospital area with plenty of parking!

We can always use quality cotton and flannel donations. All fabric should be at least 10” – 12” square or yardage. Whatever cannot be used we ensure that is donated to where it can be utilized.

Thank you to all the PieceMakers who support DFG we are truly grateful for your generosity!

Contact Ginger C or Trish V for any additional information.

sidetracked for other garden chores or walking, biking or hiking adventures! We are looking forward to seeing some of the quilts started at the February Sew Day and getting our inventory of quilts back to level where we once again send out quilts. We only have a few meetings left as we want to ensure we still are meeting our demands for our Charities and have an ample supply to display at our Quilt Show in October!

At the last meeting I read some correspondence from our past and latest Charities.

Ann Davis

Hello Patricia,

Thank you so much for reaching out and for your thoughtful message. Yes, we would absolutely love to receive the quilts. Your generosity has meant so much to the women, children and families we serve, and we are truly grateful for the care and dedication your group puts into every single quilt. They make a real and lasting difference in our community. We sincerely apologize for any confusion or lack of follow-up. There has been no change in our need quilts are still very much appreciated and welcomed. Please feel free to resume dropping them off as you had previously or let us know if you would prefer to coordinate a specific time. Please extend our heartfelt thanks to all your ladies. Their kindness and commitment are truly values, and we are so grateful for their continued partnership.

With warmest regards, Tracey Brezovski MA, Executive Director, Ann Davis Transition Society

Glenda Dafoe – Northcott Rep – Tumbler Ridge

Good morning: An update: we have surpassed 1300 quilts received and processed. We are still receiving quilts several times per week, many from guilds and shops that we didn't know were sending. I have let several shops know that we'd like to wind down and new donations should be donated to their local area. We feel grateful for the donations and are thankful that we have a place to sort and store the quilts. We have distributed 400 quilts with 500 in bags awaiting distribution at the schools, hopefully after Easter. There are still other quilts targeted for local

Check out our newest advertiser. Notice they have a special discount for purchases.



Canada's top stop for Aurifil and Superior Threads!

- Premium Threads – Aurifil, Superior, WonderFil & more
 - Valdani Hand-Dyed Pearl Cotton
 - Needles & Notions
 - Quilting Cotton
- Quilting Patterns & Applique Supplies
 - Needlepoint Tools & Threads
 - Marking Tools & Seam Rippers
 - Precision Piecing Products
 - Canadian-Made Products

More colours, more cones, more wow!
Plus, all the sewing supplies you didn't know you needed!

Guild Members Save 10%!
Use code: **GUILD10**

Proudly based in
Richmond, BC. All our prices are in
Canadian Dollars!



cindythreadworks.com



QUILTBITZ@GMAIL.COM
[250.919.8750](tel:250.919.8750)

[Guild Email Addresses](#)

chilliwackpiecemakers@gmail.com

piecemakers.treasurer@gmail.com

piecemakerswecare@gmail.com

chillpmnewsletter@gmail.com

group organizations and services, but we await the numbers needed.

Winners of the Autumn Block Challenge were Corrine W and Carol G – thanks so much for participating in the We Care Fall Challenge!

If you are in need of **batting or backing**, please contact Leah M to make arrangements. Labels are available at the meetings and Cozy Cottons. We are truly grateful to all the ladies who donate fabric, piece, long arm, bind and sew together all our wonderful quilts. You truly are an amazing group of women!

!

- Trish & Your We Care Committee

[New Advertiser](#)

We have a new quilting business coming to our 2026 quilt show, Quiltbitz. In the meantime, take a look at Kim's online store which is located in Kamloops. Welcome Kim!



[New Mini Project](#)

Since our guild will be celebrating thirty years and we have our show this fall, we would hope that you will make a placemat for our 30th year. They will be registered for the show using the on-line entry form that will come out in May. We will display all the placemats at the quilt show. This placemat can be kept by you or donated for the Meals on Wheel program in Chilliwack after the quilt show. Hope to see lots of participation and many placemats.



- Iris

Door Greeters



Greeters should be at the doors for 6pm.

Apr 2026 – Terri F / Susan S

May 2026 – Alita S / Bev T

June 2026 – Daisy S / Evelyn R

Membership/Registration

Thank you as always to our two local merchants for their continued support of our guild and their monthly donation.

March winners:

Quiltnut Creations — Gail W (one meter of fabric)

Cozy Cottons Quilting — Bev T (gift certificate \$10.)

Our guild has 53 members at present.

- Darlene & Nancy

Quilt Show 2026

October 23 and 24, 2026

Our first quilt show meeting is complete; all committees are diligently working on the tasks that need to be undertaken. A huge thank you Claudia, Leslie, Linda and Corinne who are helping with the Receiving and Returning of the quilts.



Raffle Quilt Basket Collection

This month at the meeting we will start the collecting of items for the draw baskets. Look for a drop off box on the table where the door prizes and fat quarters are collected. These baskets are made from donated items that you clean out of your sewing room. Pretty much anything goes, fat quarters (lots of lots of those are needed) and



gently used sewing items that quilters might use. If there are items brought in the cannot be used, they will be sold on the

boutique table, so nothing goes to waste. Our vendors also contribute generously to make these even more win worthy. The ticket selling takes place during the two days of the quilt show and always draws in over \$1000 dollars. Please be generous. This is what they look like when they are bundled up.

Quilt Show Challenge Project

Iris is overseeing the challenge for the quilt show, read all about her terrific idea.

These fantastic local merchants support our guild. Be sure to show your appreciation by supporting their businesses!



Cozy Cottons Quilting
Your Fabric Friends

8982 Young Rd
Chilliwack, BC
604-792-3759



SEE US FOR YOUR QUILTING NEEDS
Warm & Natural/Warm & White Batting
Olfa Cutting Mats & Cutters, Quilting Rulers
& Notions plus a wide range of Fabric
and Sew Much More

45460 Luckakuck Way (35) Telephone
Sardis, B.C. V2R 3S9 (604) 858-5729

since  2006

QuiltNut Creations
curated fabric — longarm quilting

604 798 3670
Quiltnutcreations.com
quiltnutcreations@shaw.ca

Check us out on Facebook
<https://www.facebook.com/groups/840042746122369>



Theme: What Chilliwack means to me.

Size: Perimeter of finished piece must not be larger than 24" square no matter what shape you choose.

Your small quilt must have three layers; top, batting and backing. Will require a hanging sleeve as well.

You can use any method: example traditional blocks, improv, collage, paper piecing, appliqué whatever you desire. Examples ideas are the mountains, the river, the farms, 1881 and so on.

They will be registered for the show using the on-line entry form that will come out in May.

Consider joining in on this challenge as it will be interesting to see the quilts and it should be a lot of fun.

Boutique Table

As at past shows we encourage members to donate items to the boutique sale table. They can be items you no longer want or newly made items large or small. In addition, they can be donated with 100% of the sale going to the guild or sold on consignment. The guild will retain 20% of all consignment items.



So, it is not too early to start making some small items for the table or go through your quilts to see if there are any you what to sell. All items will be priced by you and delivered on the Friday of the show.

Books and magazines will also be collected to be placed on a free table.

Guild Executive and Committee Volunteers

2025 - 2026

President:	Lyn R
Vice President:	Bev T
Past President:	Cherri M
Secretary:	Jessica H
Treasurer:	Kate D
Advertising:	Lyn R
Fat Quarter:	Bev T
Library:	Kim M
	Angela H
	Sharon B
Member at Large:	Norma H
Membership:	Darlene T
	Nancy R
Newsletter:	Karlie M
Photography:	Karlie M
Programs:	Leah M
	Iris Z
Quilt show:	Leah M
	Karlie M
Show and Tell:	Wendy L
	Kim M
	Ginger C
	Linda V
Sunshine:	Cherri M
We Care:	Trish V
	Bev T
	Leah M
	Linda V
Webpage:	Karlie M
Workshops:	Janet S
Youth Bags:	Janet S



Raffle Tickets for the Two Quilts

The tickets will be available at the May meeting ready for distribution. It is hoped that each member will sell one or more books of tickets (10 in a book \$2.00 each), but there is no pressure if you don't like doing that sort of thing. We are all set to sell tickets at the Gwynne Vaughan Park Sale, we usually sell about 100 at that location throughout the day.



- Leah

Workshop Opportunity

The A.B.C. Bag...Applique, Beading, Curves, Couching

Choose a blend of assorted fibres in your favourite colours - fabric bits, yarns, decorative threads, trims, plus beads and more. Then use your sewing machine to 'weave' it all together while you learn new techniques - Create a unique page that can become the face of a bag, a notebook cover, or a small art piece.



May Elections

Many hands make light work, so the saying goes. In May we hold elections, while most positions are carried forward for the second year of their term, we will however be needing someone for the very important role of treasurer. Please consider taking on this job, Kate would like to have someone shadow her so the handing over of the position will be a smooth transition.



A, B, C BAG WORKSHOP WITH NANCY R

Date: Saturday, May 30

Time 10:00 am to 4:00 pm

Cost \$30 to be e-transferred to piecemakers.treasurer@gmail.com.

A sign-up sheet will be available at the April meeting. We will need 10 people to sign up for the workshop to go ahead.

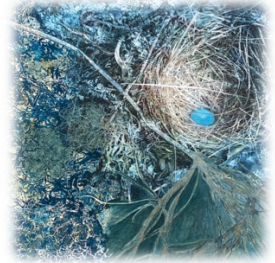
- Janet & Nancy

Quilt and Art Show

If you missed the opening reception not to worry the exhibition is on display at the Chilliwack Cultural Centre Wed to Sun for 12 noon to 5pm, free admission. You won't be disappointed if you go have a look. Poster shown below.



aLkəMe



FEATURING 7 ARTISTS

KAREN JOHNSON. KARLIE NORRISH MCCHESENEY. KATHRYN DAVIES
LILLY THORNE. NANCY RIEMERSMA. ROBIN FISCHER. TERRI VAN SLEUWEN

APR 1 - MAY 2, 2026

OPENING RECEPTION APR 4, 2026 1PM - 3PM

GALLERY HOURS WED - SUN 12PM - 5PM FREE ADMISSION




ODLUM BROWN
ART GALLERY

ODLUM BROWN ART GALLERY
9201 CORBOULD STREET
CHILLIWACK, BC
WWW.CVAA.GALLERY


CHILLIWACK VALLEY ART ASSOCIATION

