



# NEWSLETTER

February 2024

FOR THE MEMBERS OF CHILLIWACK PIECEMAKERS QUILT GUILD

## Monthly Meeting

Wed 21 February 2024

*via Zoom, program starts at 7pm.*

## February Program



Last chance to attend the PieceMakers general meeting in your pajamas! February will be the last zoom presentation for now, back to in-person in March. We will be enjoying Elaine Quehl's 'Design Journey' in which she will give us some of the tips and tricks she has up her sleeve. Elaine will be coming to us from Montreal. Let's give her a big welcome. Don't forget the PJ's and popcorn! At the end of the presentation there will be time for Q&A. See you on zoom.

- Megan

## Presidents Message

Well, we are officially into the 2<sup>nd</sup> month of 2024. Phew! So far so good. February is traditionally known as the month of hearts and in this year, 29 days! Whoo hoo!!! An extra day to quilt. A once in every 4-year event that realigns the earth with the sun so that our seasons proceed accordingly and so we adjust our calendars to allow for that crucial balance.

As quilters we adjust patterns that are not to our taste or sometimes our skill level. Am I the only one who feels that life gets in the way of my quilting time? We all have tasks and responsibilities that lie outside of the PieceMakers and I don't get as much done as I want to. So even if the New Year's resolution window has passed (calendar wise, I mean) it is never too late to make a resolution or to recommit one's desire to re-gain or equalize that feeling of joy in quilting.

I used the word "traditionally" at the outset of this month's message. However, it occurs to me that sometimes.... okay many times, we focus on the traditional style of quilting (albeit using modern methods and tools) but we have a vibrant modern art group of incredibly creative artists and quilters in our guild and in our quilting community at large. What fascinates me is the 'overlap' of those 2 characteristics: the traditional and the modern. And I think they make a 'great couple'.

Whether we have show and tell at our guild meetings or invite the artists from FAN (Fibre Art Network) there is such a generosity among this group that touches me deeply. The willingness to share inspiration and technique is so gratifying. So, I encourage you to try something different with the gift of our quilters who see the art form perhaps a

## Membership/Registration

Our guild membership is 70 members. We had 34 members attend our January Zoom meeting.

A big thank you to our two local merchants for your generous gift donations.

Please shop local and show your support to these ladies .... They are so helpful and full of great ideas.

Congratulations to our January winners -

Cozy Cotton Quilts – Norma H  
Quiltnut Creations – Cheryl W

Good luck everyone at our Feb zoom draw!



- Nancy & Darlene

## February Zoom Meeting

Look for the **zoom link** in your email inbox or junk folder. The link will be sent a few days ahead of the meeting.

little or a lot differently from us traditional quilters. I think you will find it is a whole new world: one with endless possibilities to blaze your own trail or technique. Be fearless. At the same time, I say that there is nothing wrong with being a copycat. Uh oh is that TMI? Admitting to being a copycat, in my opinion is akin to saying, 'imitation is the sincerest form of flattery'.

My wish for every one of our members is that you imitate and/or blaze your own trail to your heart's content.

Proud to be a PieceMaker

- Cherri

## Zoom PowerPoint Presentation

Please take pictures of your completed We Care items, finished quilt projects, block of the month and completed UFO projects. Please send these to the guild email address so they can be included in PowerPoint shows that will be shared as part of our zoom program.

[chilliwackpiecemakers@gmail.com](mailto:chilliwackpiecemakers@gmail.com)

## Day Retreat

Mark your calendars! Another **Free Day Retreat** is planned for Saturday 25 May 2024 at Community of Christ Church Hall on Carleton Street, Chilliwack from 10am to 4pm. This is a great day to get lots of sewing done and visit with other guild members. A sign-up sheet will be passed around at the April meeting.

- Janet & Karlie

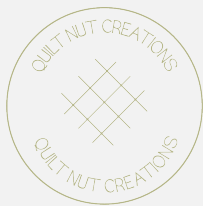


These fantastic local merchants support our guild. Be sure to show your appreciation by supporting their businesses!



**Cozy Cottons Quilting**  
Your Fabric Friends

8982 Young Rd  
Chilliwack, BC  
604-792-3759



since  2006

**QuiltNut Creations**  
curated fabric — longarm quilting

604 798 3670  
Quiltnutcreations.com  
quiltnutcreations@shaw.ca



**SEE US FOR YOUR QUILTING NEEDS**  
Warm & Natural/Warm & White Batting  
Olfa Cutting Mats & Cutters, Quilting Rulers  
& Notions plus a wide range of Fabric  
and Sew Much More

45460 Luakakuck Way (35) Telephone  
Sardis, B.C. V2R 3S9 (604) 858-5729



**beatrice Rieske**  
Patterns & Longarm Quilting

5753 Kathleen Drive  
Chilliwack, BC V2R 3Y8  
(604) 701-3203  
beatrice@pumpkinpatchbc.com  
pumpkinpatchbc.com

**Pumpkin Patch**

## We Care

**News:** We now have a dedicated email set-up for We Care it is [piecemakerswecare@gmail.com](mailto:piecemakerswecare@gmail.com).



We would appreciate you all using this email when you are

communicating with the We Care committee.

Thank you to all the ladies who dropped off quilts during January. Completed quilts can be dropped at Cozy Cottons until our in-person meeting in March or contact the We Care email to make other arrangements if needed for incomplete portions. Labels are also available at Cozy Cottons.

We are truly grateful to everyone who participates in the "We Care" program for our designated charities in Chilliwack and Agassiz. Several ladies have stepped up to help with different portions of completion i.e. binding, longarm quilting, piecing please let us know if you wish to be added to the list. Thank you as we can appreciate many are not able to do all parts! We will coordinate and contact you with details.

**Reminder:** Leslie Z and Cathy V are collecting wheelchair quilts for homes in Agassiz. The pattern and instructions are on the website.

Patterns are available on the website for ideas and squares and fabric are available at the in-person meetings and 'WE Care' sew days. You can use your own fabrics or combine with quilt squares already pre-cut and available at the meetings. Quilt size suggestions are listed below. Quilts need not be limited to those on the website, you can utilize your own preferred pattern.

**Scraps:** Thank you to everyone who has donated fabric scraps in the past. The Recycling program is no longer available and has been discontinued by the manufacturer! Sad to see it will now end up in the landfill unless anyone knows of another program who could use the scraps please contact Trish V.

## Block of the Month

Instructions for block #6 will be sent out this week...this month you will using a template to cut a curved section for your block.

At the zoom meeting I will have finished samples and answer any questions you may have.

Please send a photo showing all 5 or 6 completed blocks to Karlie for posting in the Show and Tell slide show. And, yes, we love to see your blocks posted on the Facebook page...

I hope that you are all caught up on your blocks thus far...there will be a draw for prizes in March at the in-person meeting.

Keep having fun with your chosen colours...looking forward to your photos.

Happy creating! - Nancy



### Guild Emails

[chilliwackpiecemakers@gmail.com](mailto:chilliwackpiecemakers@gmail.com)

[chillpmnewsletter@gmail.com](mailto:chillpmnewsletter@gmail.com)

### Check us out on Facebook

<https://www.facebook.com/groups/840042746122369>

**Batting:** If anyone in the Guild would like to have batting scraps please let Trish V. or Bev B know. We know that some people use this as stuffing for pillows, soft toys or dolls. We really don't want to see this going into the garbage!

**Days for Girls:** We can use cotton and flannel as all kits were delivered last year and we are starting fresh hoping to exceed our 900-kit total from last year. All fabric should be at least 10"-12". Thank you! Contact Trish V or Ginger C to help with this cause our next Sew Day is February 23<sup>rd</sup>!

**Wheelchair** - 36" x 45"

**Kids** - 40" square or 36" x 40" or 45" x 50"

**Meadow Rose Society** - 36" square or 40" square

**Child Development** - Infant size 36" square

**Hospice** - 53" x 72" or 50" x 65-70"

**Ann Davis** - any size works because they have a variety of people they donate to.

Many thanks,

- Your We Care Committee

## Quilt Show 2024

All positions for the committees are full, thanks to Lori and Mary-Susan who are doing our Advertising. We had our meeting on Feb 12 to update the committee workers on what has been completed to date. It was also an opportunity to discuss and ask questions for jobs to be done.



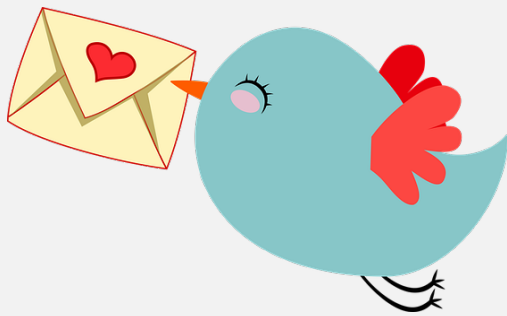
Our raffle quilt blocks and the quilt flimsy were sewn over two days by a wonderful group of sewing and ironing volunteers. Beatrice completed the long arm quilting, Evelyn H made our embroidered labels and Janet is completing the binding.



## Your Input Is Welcome

During our last Executive meeting, I brought up the suggestion for everyone to have an easy avenue to communicate to the Executive. Topics that you would like to be addressed at our monthly Executive meeting.

As you know, our meetings are held the 1st Wednesday of the month. Please submit your ideas OR concerns with confidence that you will be heard, so we can continue planning fun events at our in-person monthly meetings and other activities.



With all our membership, I'm sure there are a lot of awesome ideas amongst us.

Please direct your emails to the guild address –  
[chilliwackpiecemakers@gmail.com](mailto:chilliwackpiecemakers@gmail.com)

I will personally communicate to you that I have read and received your message. Cut off for submission is two days before our meeting to be fair of planning our agenda.

- Lori, Vice President



At our March meeting in-person we will be kicking off the information presentation to the guild members, topics to be covered will be raffle baskets, quilt challenge, registration, boutique/consignment table. We know there are many new members that will be experiencing their first quilt show with our guild, so we want to keep you all informed and up to date.

- Karlie

## Remembering Sandra

Sandra Lounsbury, a long-time guild member #6, will be having a Celebration of Life on April 12, 2pm to 4pm at the Chilliwack Alliance Church. Many of Sandra's quilts will be on display and there will be a tea afterwards.

## Sew Fun Saturday



Not doing anything on Saturday's join in on zoom and sew on your project from your own sewing room. Link is sent to your email. ☺